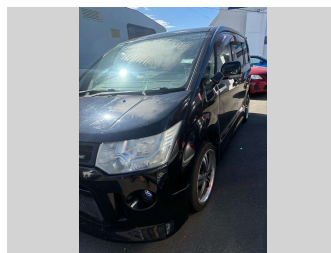
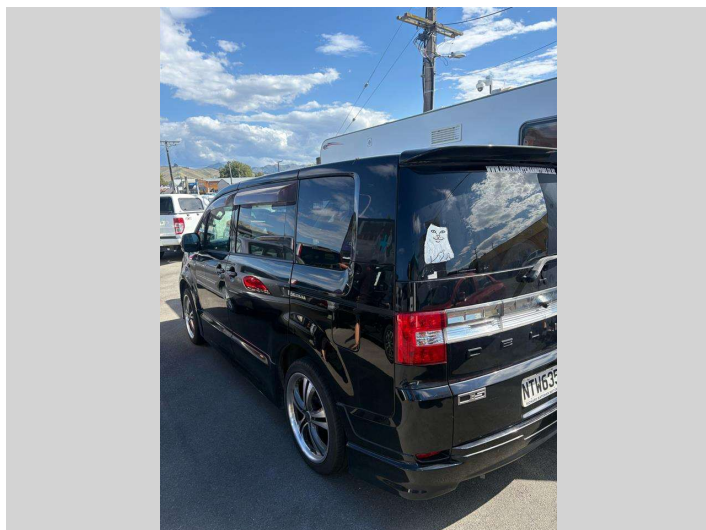


# 2008 Mitsubishi DELICA VAN



**Purchase Price** **\$9,995**  
Includes GST, Registration & Licensing

Finance may be available on this vehicle. Ask one of our friendly staff for more information.

Gain peace of mind with Mechanical Breakdown Insurance. **Ask us how.**

**Top features**  
» 7 SEATER

Body Style  
**5 door, People Movers**

Odometer  
**161,927 km**

Engine  
**2350 cc**

Fuel Type  
**Petrol**

Transmission  
**Auto**

Wheels  
-

VIN  
-

Interior  
**Black**

Safety



Based on 2025 VSRR rating

Reg No.  
**NTW635**

Ext Colour  
**Black**

History  
-

Seats  
**7 seats**

CO2 Emissions  
★ ★ ☆ ☆ ☆ ☆  
**244 grams/km**

Energy Economy  
★ ☆ ☆ ☆ ☆ ☆  
**Annual fuel cost of \$4,000**  
**10.2L per 100km**

Cost per year is an estimate based on petrol price of \$2.80 per litre and an average distance of 14000 km. Emissions and Energy Economy figures standardised to 3P WLTP.

**Stock ID: 6996**



Richard Bateman Motors | Phone 03 578 5670 | Email bateman.motors@xtra.co.nz  
31 Main Street, Blenheim, BLENHEIM 7201, New Zealand  
www.richardbatemanmotors.co.nz