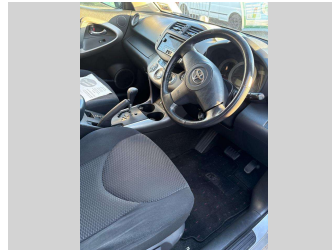
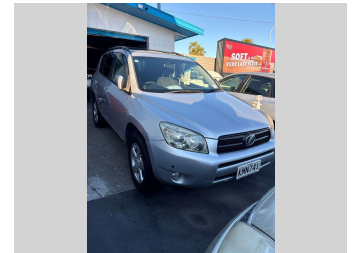
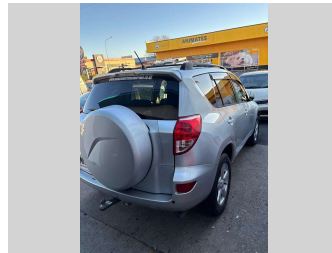
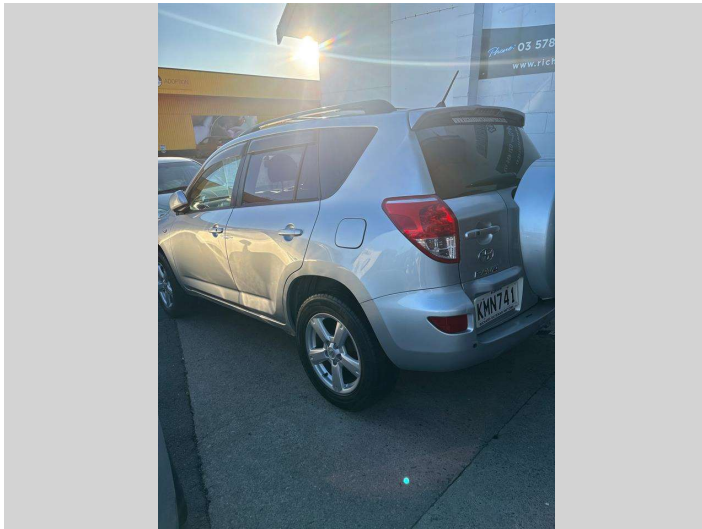


2005 TOYOTA RAV4



Purchase Price **\$8,995**
Includes GST, Registration & Licensing

Finance may be available on this vehicle. Ask one of our friendly staff for more information.

Gain peace of mind with Mechanical Breakdown Insurance. **Ask us how.**

- Top features**
- » Air Conditioning
 - » ALLOY WHEELS
 - » AUX
 - » CAMCHAIN ENGINE
 - » CD PLAYER
 - » Central Locking
 - » CRUISE CONTROL
 - » DUAL AIRBAGS
 - » Electric Mirrors
 - » ELECTRIC WINDOWS
 - » Rear Wiper
 - » Roof Rack
 - » TINTED WINDOWS
 - » Tow Bar

Body Style
5 door, SMALL SUV

Odometer
187,897 km

Engine
2362 cc

Fuel Type
Petrol

Transmission
Auto

Wheels
alloy wheels

VIN
-

Interior
BLACK/GREY

Safety



Based on 2025 UCSR rating for 06-12 models

Reg No.
KMN741

Ext Colour
Silver

History
-

Seats
5 seats

CO2 Emissions
★ ★ ★ ☆ ☆ ☆
216 grams/km

Energy Economy
★ ☆ ☆ ☆ ☆ ☆
Annual fuel cost of \$3,650
9.3L per 100km

Cost per year is an estimate based on petrol price of \$2.80 per litre and an average distance of 14000 km. Emissions and Energy Economy figures standardised to 3P WLTP.

Stock ID: 7029



Richard Bateman Motors | Phone 03 578 5670 | Email bateman.motors@xtra.co.nz
31 Main Street, Blenheim, BLENHEIM 7201, New Zealand
www.richardbatemanmotors.co.nz