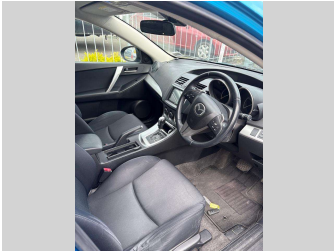
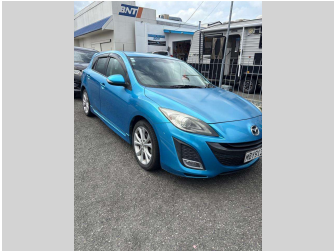


2009 Mazda AXELA



Purchase Price

Includes GST, Registration & Licensing

\$11,995

Finance may be available on this vehicle. Ask one of our friendly staff for more information.

Gain peace of mind with Mechanical Breakdown Insurance. **Ask us how.**

Top features

- » Air Conditioning
- » ALLOY WHEELS
- » CAMCHAIN ENGINE
- » Central Locking
- » DUAL AIRBAGS
- » Electric Mirrors
- » ELECTRIC WINDOWS

Body Style
5 door, Hatchback

Odometer
133,684 km

Engine
2000 cc

Fuel Type
Petrol

Transmission
Auto

Wheels
alloy wheels

VIN
-

Interior
BLACK/GREY, Cloth

Safety



Based on 2024 UCSR rating for 09-13 models

Reg No.
MBY913

Ext Colour
Blue

History
-

Seats
5 seats

CO2 Emissions
★★★★☆
183 grams/km

Energy Economy
★★☆☆☆
Annual fuel cost of \$2,980
7.6L per 100km

Cost per year is an estimate based on petrol price of \$2.80 per litre and an average distance of 14000 km. Emissions and Energy Economy figures standardised to 3P WLTP.

Stock ID: 6972

RICHARD BATEMAN *Motors*

Richard Bateman Motors | Phone 03 578 5670 | Email bateman.motors@xtra.co.nz
31 Main Street, Blenheim, BLENHEIM 7201, New Zealand
www.richardbatemanmotors.co.nz